

COST AND REGISTRATION

The cost for this class is \$145.00 per person. The price includes registration and materials. To register, call the JWCC Workforce Education office at (217) 641-4971 or e-mail wdc@jwcc.edu.

Ask your employer about tuition assistance: Many agencies, corporations, and organizations in the area pay their employees' tuition. Students should check with their organizations to learn if they are eligible.



JWCC CORE VALUES

Self-development. Excellence. Accountability. Integrity

John Wood Community College is regionally accredited by The Higher Learning Commission and a member of the North Central Association.

John Wood Community College does not discriminate on the basis of race, color, national origin, gender, disability or other factors prohibited by law.

Non-Profit Org.
U.S. Postage
PAID
Permit No. 971
Quincy, IL 62301

John Wood Community College
Workforce Education
1301 South 48th St.
Quincy IL 62305



JOHN WOOD COMMUNITY COLLEGE

NFPA 70E

Fall 2011



JOHN WOOD
COMMUNITY COLLEGE

Your college, for your life.
(217) 224-6500 | jwcc.edu

COURSE DESCRIPTION

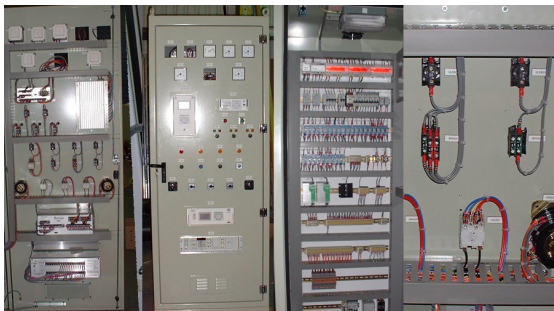
This eight-hour instructor-led course provides the participant with a basic understanding of safe workplace practices. This course will review the NFPA 70E, Chapter 1, 2009 Edition. This class meets the mandates of training as prescribed in NFPA 70E, Chapter 1, Article 110.6.

This course is intended for individuals who face a risk of electrical hazard and need to understand the electrical hazard present in electrical equipment.

DATE, TIME AND LOCATION

October 19 and 26, 2011
Wednesdays, 8:00 AM - 12:00 PM

JWCC Workforce Development Center
4220 Kochs Lane
Quincy, Illinois
Room W112



COURSE OBJECTIVES

After completing this course, participants will be able to:

- Identify electrical hazards
- Classify electrical hazards and apply techniques and procedures for safe work practices
- Identify techniques to create a culture where electrical safety is part of the workplace

TOPICS COVERED

- Electrical safety principles
- Electrical safety controls
- Hazard prevention
- Site evaluation and pre-job meeting
- Effects of electrical shock and shock prevention. OSHA 1910.137
- Electrical safety and approach boundaries for qualified and unqualified employees. OSHA 1910.331-335, NFPA 70E Article 130.2
- Effects of arc blast and flash
- Selecting flash protection PPE based on incident energy
- Selecting PPE using risk analysis in NFPA 70E Chapter 1, Article 130, Annex F for:
 - ◊ Panel boards
 - ◊ Switchboards
 - ◊ Motor Control Centers
 - ◊ Switchgear
- Proper lockout and tagout per OSHA 1910.147
- Proper grounding and OSHA 1910.269
- NFPA 70E 2006 edition, Annex A to H

